



## Mouse anti Human IgA Monoclonal Antibody

Alternative Name(s): Immunoglobulin, type A

### Order Information

- **Description:** IgA (hu)
- **Catalogue:** 605-880
- **Lot:** See label
- **Size:** 100ug/200ul
- **Host:** Mouse
- **Clone:** GA112
- **Application:** IHC(P), WB, ELISA, FC
- **Reactivity:** Hu

### **ANTIGEN PREPARATION**

Human immunoglobulin IgA

### **BACKGROUND**

The antibody is specific for the heavy chain of IgA in serum and colostrum. No cross-reactivity with IgG, IgM, IgD, or IgE is observed. All of the IgA monomers contain two heavy and two light chains that possess 12 domains, two heavy chain C-terminal tailpieces, and N-linked glycosylation sites at Asn263 and Asn459. More IgA is produced daily than all the other antibody classes combined. IgA is unique in being the only immunoglobulin class that exists in multiple oligomeric states. IgA is present as two subclasses, IgA1 and IgA2, the latter of which is found in at least two allotypic forms. Both IgA1 and IgA2 have been found in external secretions like colostrum, tears, and saliva. Immunoglobulin A is the most abundant immunoglobulin isotype in mucosal secretions. In the blood, IgA interacts with an Fc receptor FcαRI, which is expressed on immune effector cells, to initiate inflammatory reactions.

### **PURIFICATION**

The mouse IgG is purified by Protein A-Affinity Chromatography according to Isotyping

### **FORMULATION**

This affinity purified antibody is supplied in sterile Phosphatebuffered saline (pH7.2) containing antibody stabilizer

### **SPECIFICITY**

This antibody recognizes human IgA (hu) protein. The other species are not tested.

### **STORAGE**

The antibodies are stable for 24 months from date of receipt when stored at  $-20^{\circ}\text{C}$  to  $-70^{\circ}\text{C}$ . The antibodies can be stored at  $2^{\circ}\text{C}$ - $8^{\circ}\text{C}$  for three month without detectable loss of activity. Avoid repeated freezing-thawing cycles.

### **APPLICATIONS/SUGGESTED WORKING DILUTIONS\***

- Western Blot: 0.1-1  $\mu\text{g/ml}$
- ELISA: 0.01-0.1  $\mu\text{g/ml}$
- Immunoprecipitation: 2-5  $\mu\text{g/ml}$
- IHC: 2-10  $\mu\text{g/ml}$
- Flow cytometry: Not tested
- Molecular Weight: 160.0
- Positive Control: Kidney Tissue
- Cellular Location: Cell Membrane

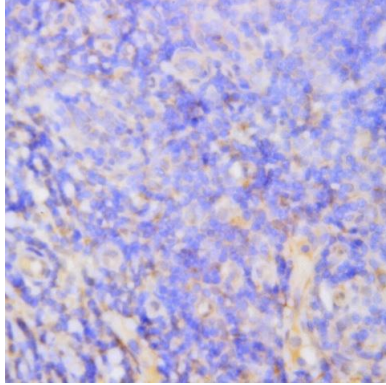
\*Optimal dilutions should be determined by researchers for the specific applications.

### **FOR RESEARCH USE ONLY.**

AbboMax, Inc 2528 Qume Drive, Suite 8, San Jose, California 95131, USA  
1 408-573-1898 (Tel). 1 408-573-1858 (Fax). [www.abbomax.com](http://www.abbomax.com) [info@abbomax.com](mailto:info@abbomax.com)



## DATA ATTACHMENTS



Immunohistochemistry: Human Tonsil (FFPE) stained with Mouse anti-IgA (Cat# 605-880) at 1:200 for 10 min @ RT. Staining of formalin-fixed tissue requires boiling tissue sections in 10 mM Citrate Buffer, pH 6.0 for 10 min followed by cooling at RT for 20 min.

## REFERENCES

### FOR RESEARCH USE ONLY.

AbboMax, Inc 2528 Qume Drive, Suite 8, San Jose, California 95131, USA  
1 408-573-1898 (Tel). 1 408-573-1858 (Fax). [www.abbomax.com](http://www.abbomax.com) [info@abbomax.com](mailto:info@abbomax.com)